





Child Care Access

Morgan County





The State of Child Care

Child Care Availability





 # of home-based child care programs	2
 # of center-based child care programs	0

Child Care Subsidy Participation

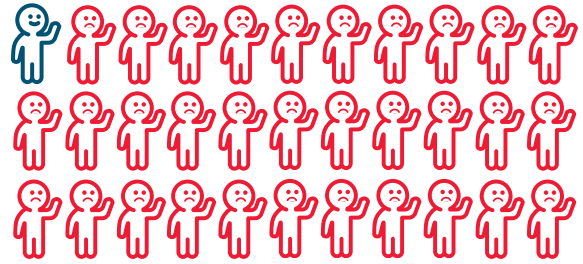
for Cache, Summit, Morgan & Rich Counties

 # of kids eligible for child care subsidies	5,433
 # of kids receiving child care subsidies	571

Child Care Needs

 Kids under 6 with all parents working	46%
 Kids under 6 potentially in need of care	525
 Total available child care spots	16
 Remaining child care spots needed	509

For every **33** kids in need of care, there is **1** licensed child care spot in Morgan County.



The Cost of Care



Infant/Toddler Care: \$7,452

Preschool-Age Care: \$6,705

Annual Total Cost: \$14,157

Median 4-Person Family Income: \$136,118

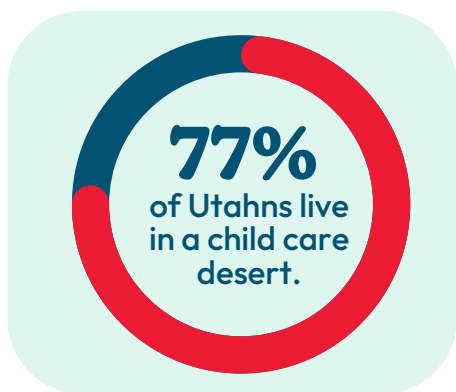
Percent of income spent on child care: **10%**



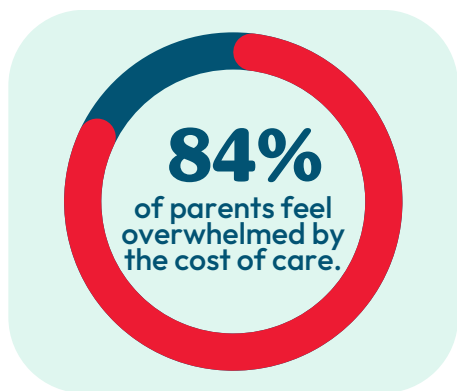
The Cost to Provide Care

Average Provider Wage: \$12.87/hour
Average Provider Salary: \$26,770/year

On average, child care educators make less than **dogwalkers**.

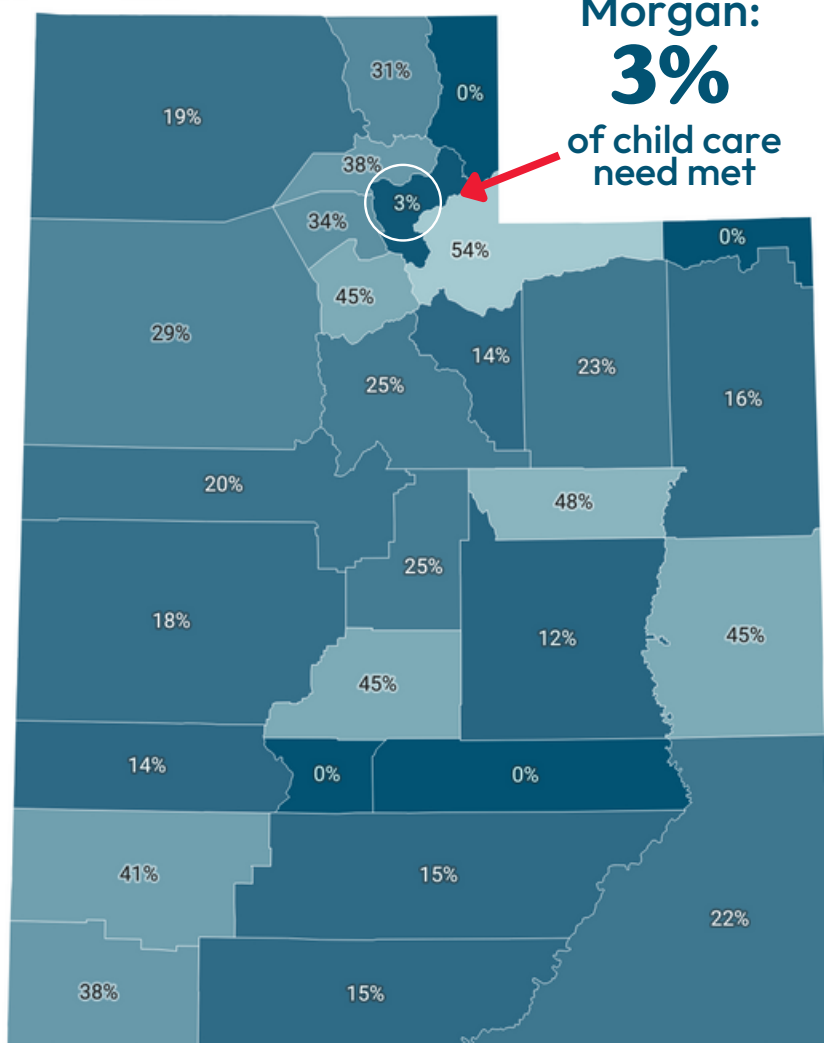


**Utah's
economy loses
\$1.36 Billion
each year due to
lack of child care
access.**



Child Care Need Fulfilled by Licensed Child Care

Percentage of licensed child care slots divided by the number of kids under 6 with all available parents in the workforce



Morgan:
3%
of child care
need met

Source: Number of children under 6 with all available parents in the workforce by age group and county provided by the ACS 2021 5-year estimates Table B23008. Licensed child care data provided by the Utah Office of Child Care as of August 2023 and tabulated by Voices for Utah Children. • Created with Datawrapper