





Child Care Access

Millard County







The State of Child Care

Child Care Availability



 # of home-based child care programs	1
 # of center-based child care programs	2

Child Care Needs

 Kids under 6 with all parents working	51%
 Kids under 6 potentially in need of care	622
 Total available child care spots	113
 Remaining child care spots needed	509

Child Care Subsidy Participation

for Southwest & South Central Utah (Beaver, Garfield, Iron, Juab, Kane, Millard, Piute, Sanpete, Sevier, Wayne & Washington Counties)

 # of kids eligible for child care subsidies	8,924
 # of kids receiving child care subsidies	1,489

For every **6** kids in need of care, there is **1** licensed child care spot in Millard County.



The Cost of Care



Infant/Toddler Care: \$10,200

Preschool-Age Care: \$8,138

Annual Total Cost: \$18,338

Median 4-Person Family Income: \$77,813

Percent of income spent on child care: **24%**



Child Care Access

Statewide



The Cost to Provide Care

Average Provider Wage: \$12.87/hour
Average Provider Salary: \$26,770/year

On average, child care educators make less than dogwalkers.

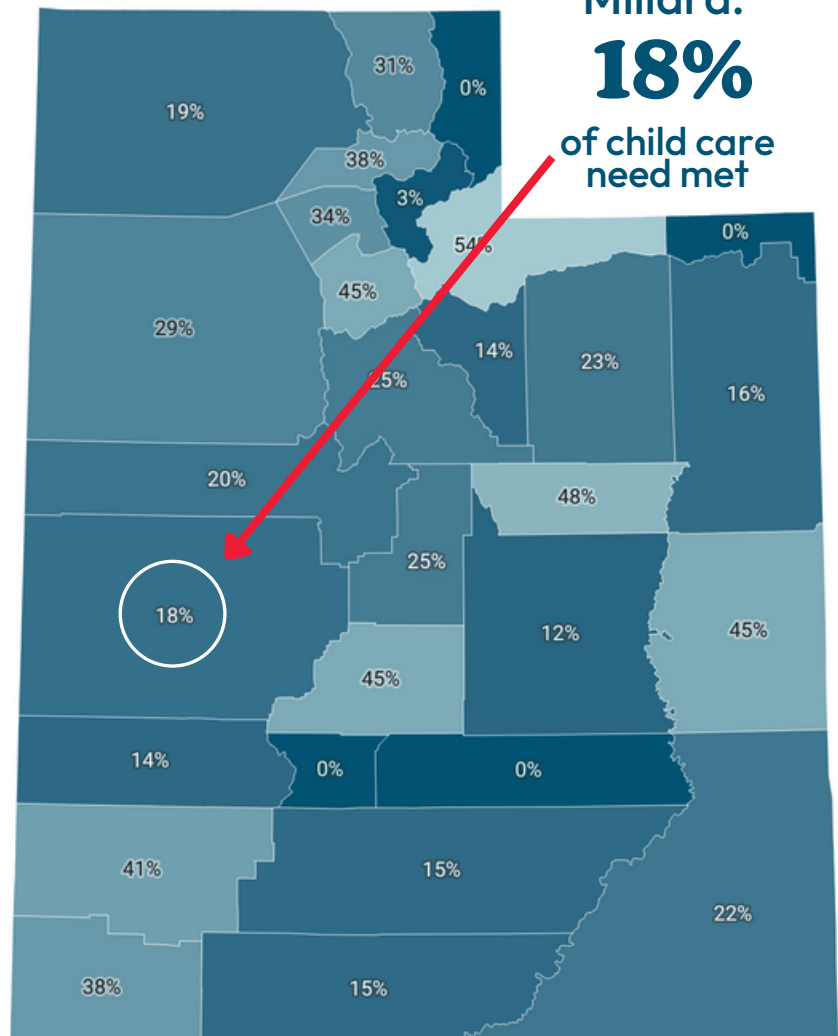


Child Care Need Fulfilled by Licensed Child Care

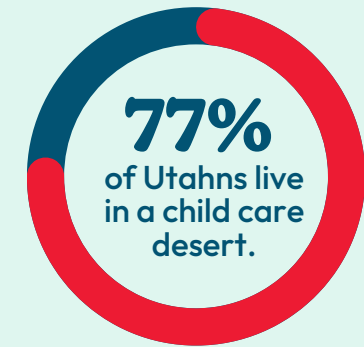
Percentage of licensed child care slots divided by the number of kids under 6 with all available parents in the workforce



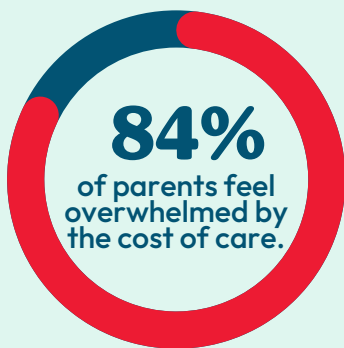
Millard:
18%
of child care need met



Source: Number of children under 6 with all available parents in the workforce by age group and county provided by the ACS 2021 5-year estimates Table B23008. Licensed child care data provided by the Utah Office of Child Care as of August 2023 and tabulated by Voices for Utah Children. • Created with Datawrapper



Utah's economy loses **\$1.36 Billion** each year due to lack of child care access.



Read the full report at bit.ly/utahchildcareaccess

Statewide